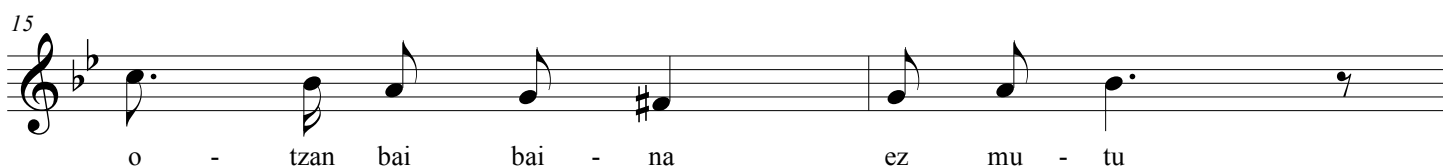
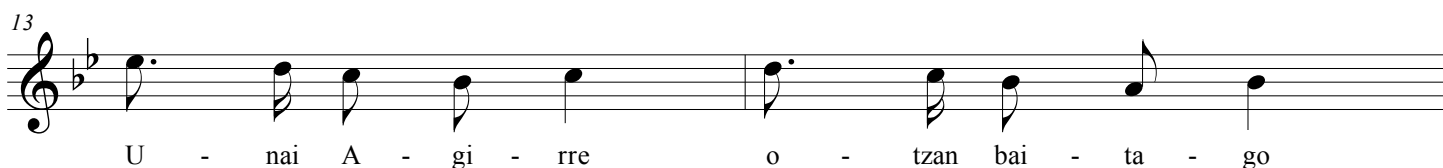
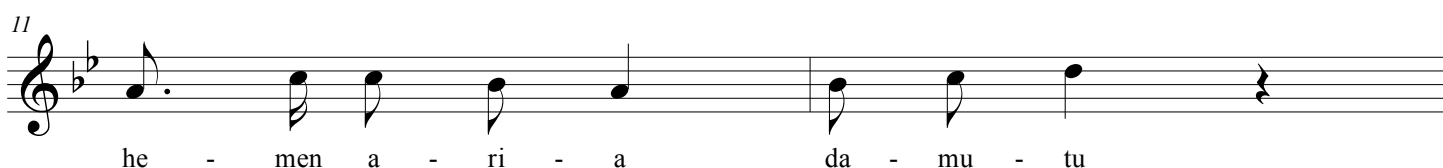
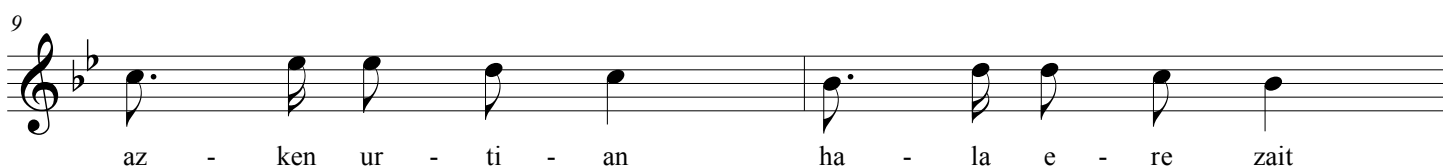
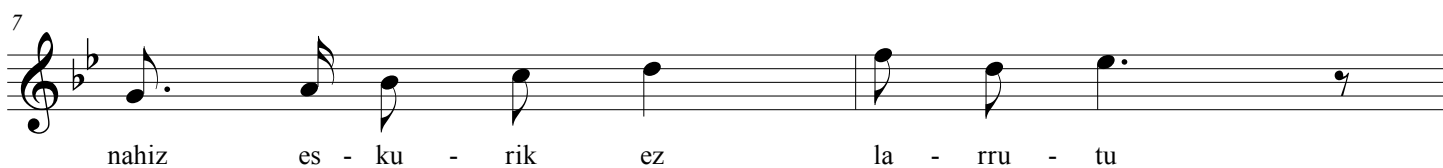
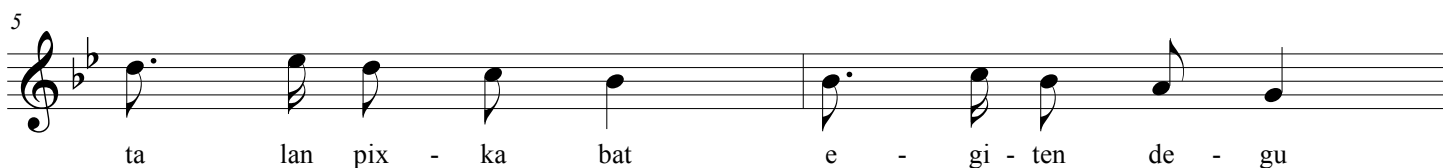
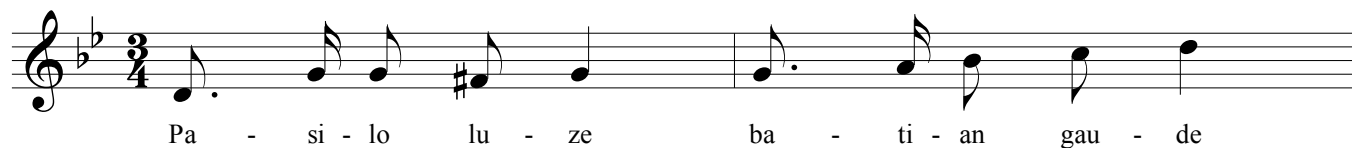
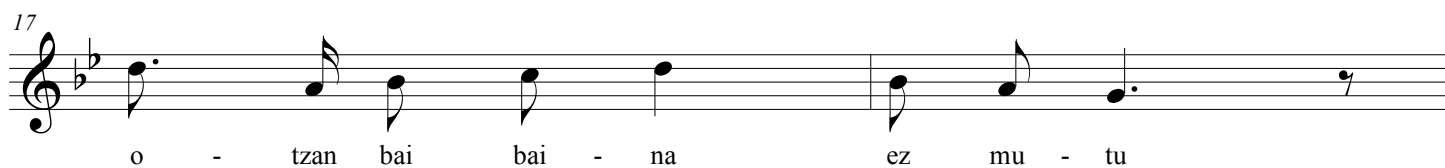


# PASILO LUZE BATIAN GAUDE



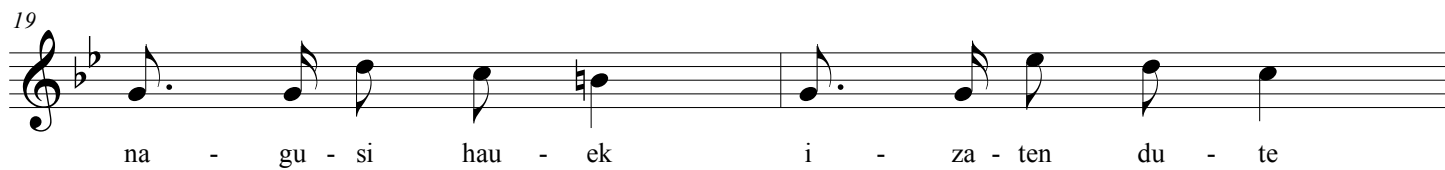
17



o - tzan bai bai - na ez mu - tu

Musical notation for line 17: Treble clef, key signature of two flats (B-flat and E-flat), 2/4 time signature. The melody consists of eighth and quarter notes. The lyrics are: o - tzan bai bai - na ez mu - tu.

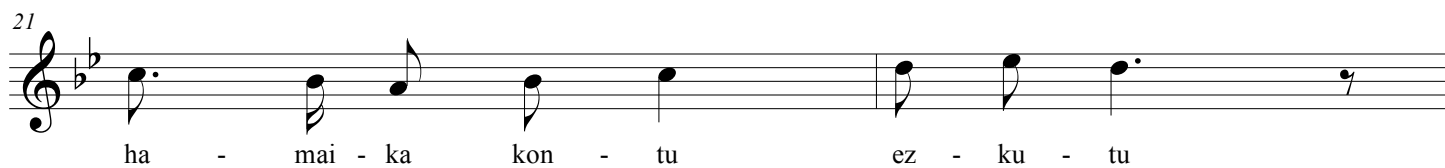
19



na - gu - si hau - ek i - za - ten du - te

Musical notation for line 19: Treble clef, key signature of two flats (B-flat and E-flat), 2/4 time signature. The melody consists of eighth and quarter notes. The lyrics are: na - gu - si hau - ek i - za - ten du - te.

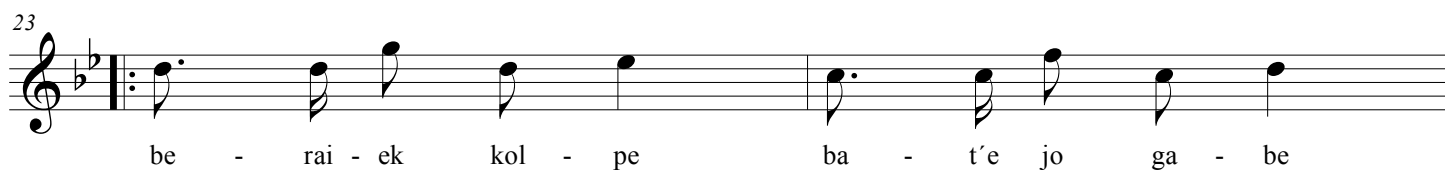
21



ha - mai - ka kon - tu ez - ku - tu

Musical notation for line 21: Treble clef, key signature of two flats (B-flat and E-flat), 2/4 time signature. The melody consists of eighth and quarter notes. The lyrics are: ha - mai - ka kon - tu ez - ku - tu.

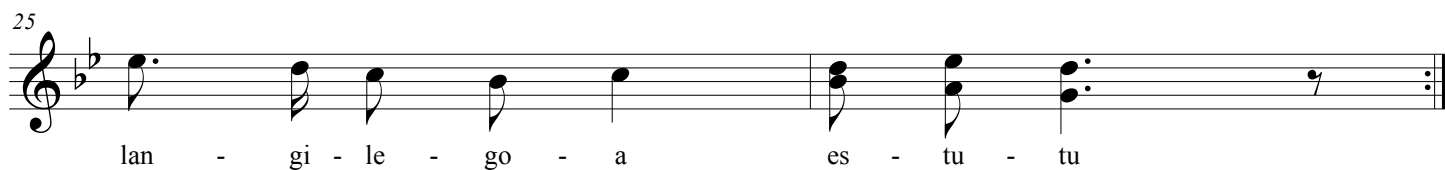
23



be - rai - ek kol - pe ba - t'e jo ga - be

Musical notation for line 23: Treble clef, key signature of two flats (B-flat and E-flat), 2/4 time signature. The melody consists of eighth and quarter notes. The lyrics are: be - rai - ek kol - pe ba - t'e jo ga - be.

25



lan - gi - le - go - a es - tu - tu

Musical notation for line 25: Treble clef, key signature of two flats (B-flat and E-flat), 2/4 time signature. The melody consists of eighth and quarter notes. The lyrics are: lan - gi - le - go - a es - tu - tu.